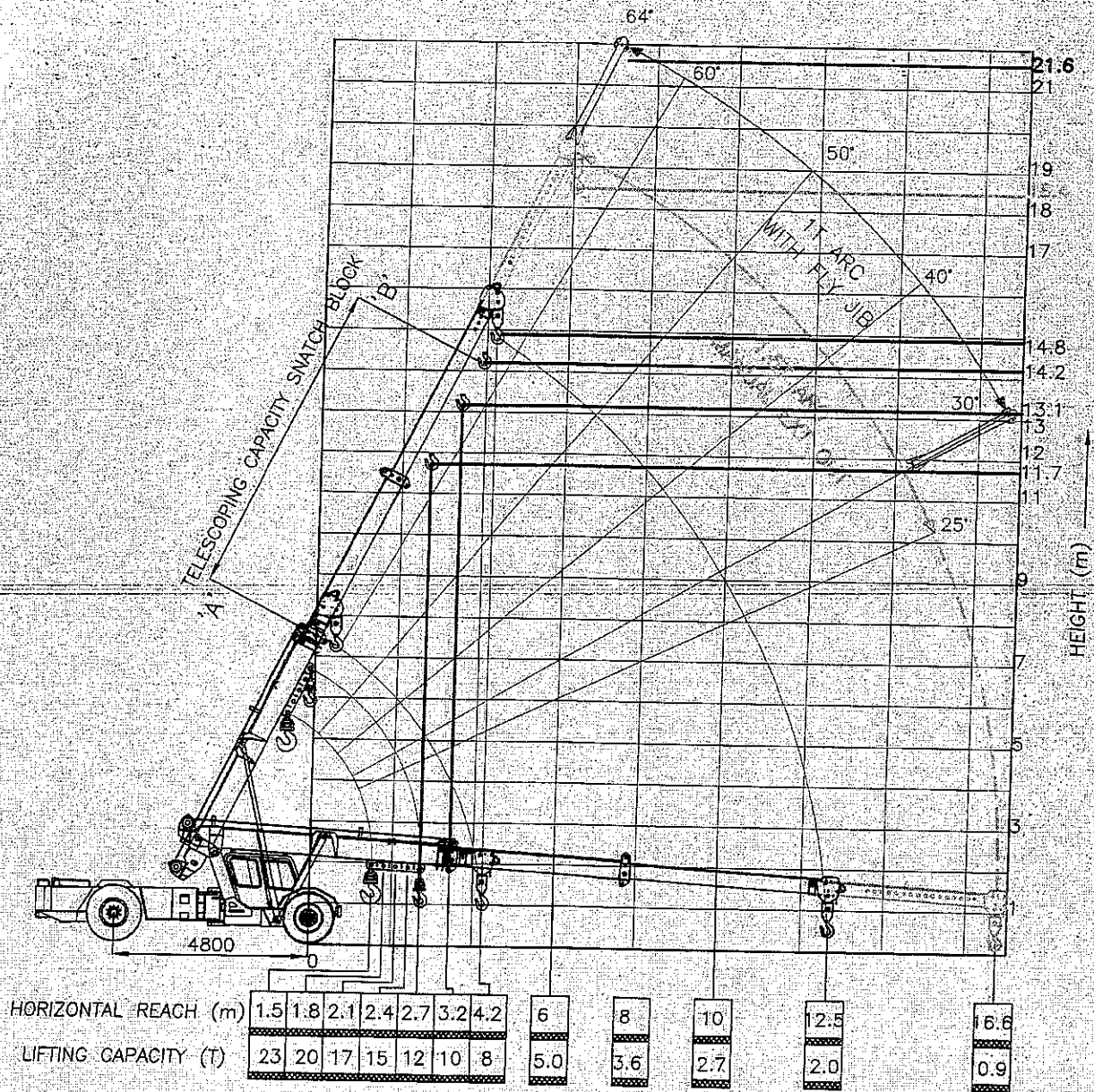




# Load Chart of ESCORTS TRX 2319



## FEATURES:

- Hydrostatic Transmission with stepless variable speeds
- Safe load indicator (SLI) system as a standard fitment
- Rope compensating snatch block for auto leveling of loads
- Maximum Travel speed of 40 km/hr (unladen) for faster coverage of long distances
- 4 part boom (3 part hydraulically powered + 4th part mechanically operated) for higher heights
- Front-end centrally mounted aesthetically designed spacious cabin for 2 persons with ergonomic controls
- Load deck at the rear
- Joystick controls

## NOTE:

- Maximum load lifting capacity : 23 T
- Maximum Boom Height : 19m / 22m with fly jib
- Maximum Horizontal Reach : 16.6m
- 12T can be lifted to the under hook height of 11.7m
- 10T can be lifted to the under hook height of 13.1m
- 9T can be lifted to the under hook height of 14.2m
- 8T can be lifted to the under hook height of 14.8m
- Telescopic capacity (laden) of snatch block from pt. 'A' to 'B' : 9T
- 1.5T can be lifted to the under hook height of 18.4m
- 1T can be lifted to the under hook height of 21.6m
- Tyres to be inflated with recommended air pressure
- Lifting capacity is as per IS:4573 - 1982 on a firm & level ground
- Weights of chains, slings & tackles to be considered extra